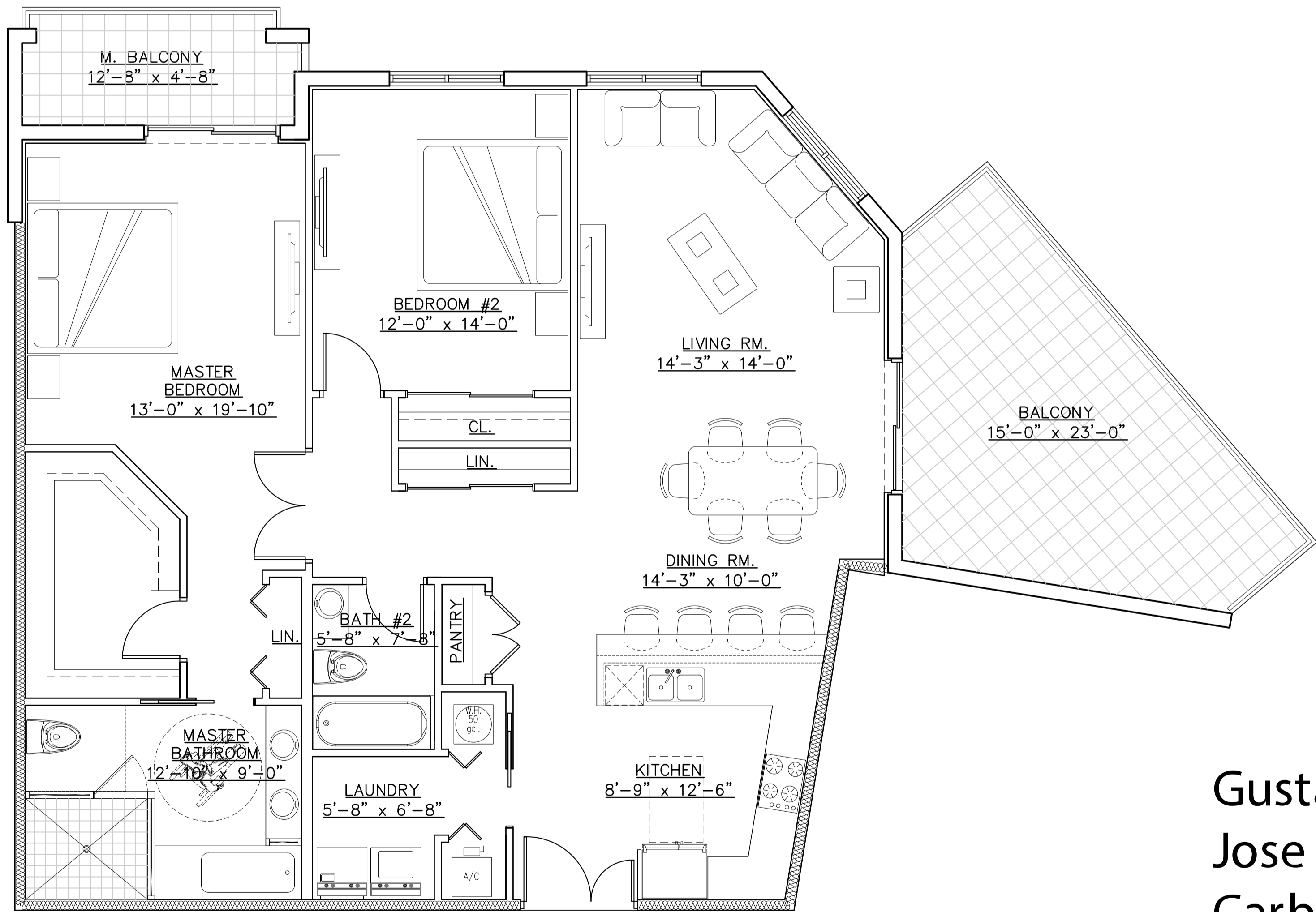


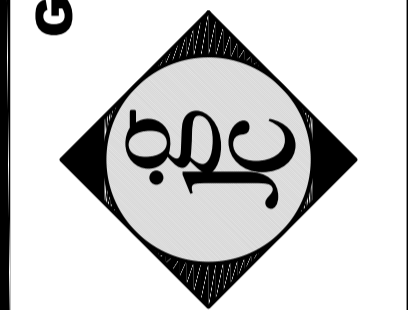
APT. #2, #3, #5
TOTAL A/C AREA = 1,433 SQ.FT.



APT. #1
TOTAL A/C AREA = 1,484 SQ.FT.

REVISION	BY:

GUSTAVO J. CARBONELL, P.A.
Architect and Planner
1457 N.E. 4th AVE., 33304
Ft. Lauderdale, Florida, 33304
(954) 462-6565
Member American Institute of Architects
FLORIDA REGISTRATION
A/R NO. 0007957
A.A. NO. 26001131



PROPOSED MULTIFAMILY DEVELOPMENT FOR:
SABBIA BEACH PARCEL B
723 N. OCEAN BOULEVARD
Pompano Beach, Florida

Gustavo Jose Carbonell
Digitally signed by Gustavo Jose Carbonell
Date: 2020.12.13 13:24:14 -05'00'

DRAWN	M.J.G.
CHECKED	G.J.C.
DATE	JUNE 2020
SCALE	AS SHOWN
JOINT NO.	025
SHEETS	3